



Beaufort County
Public Works
Stormwater Infrastructure
Project Summary

Project Summary: St Helena Island Valley Drains

Activity: Routine/Preventive Maintenance

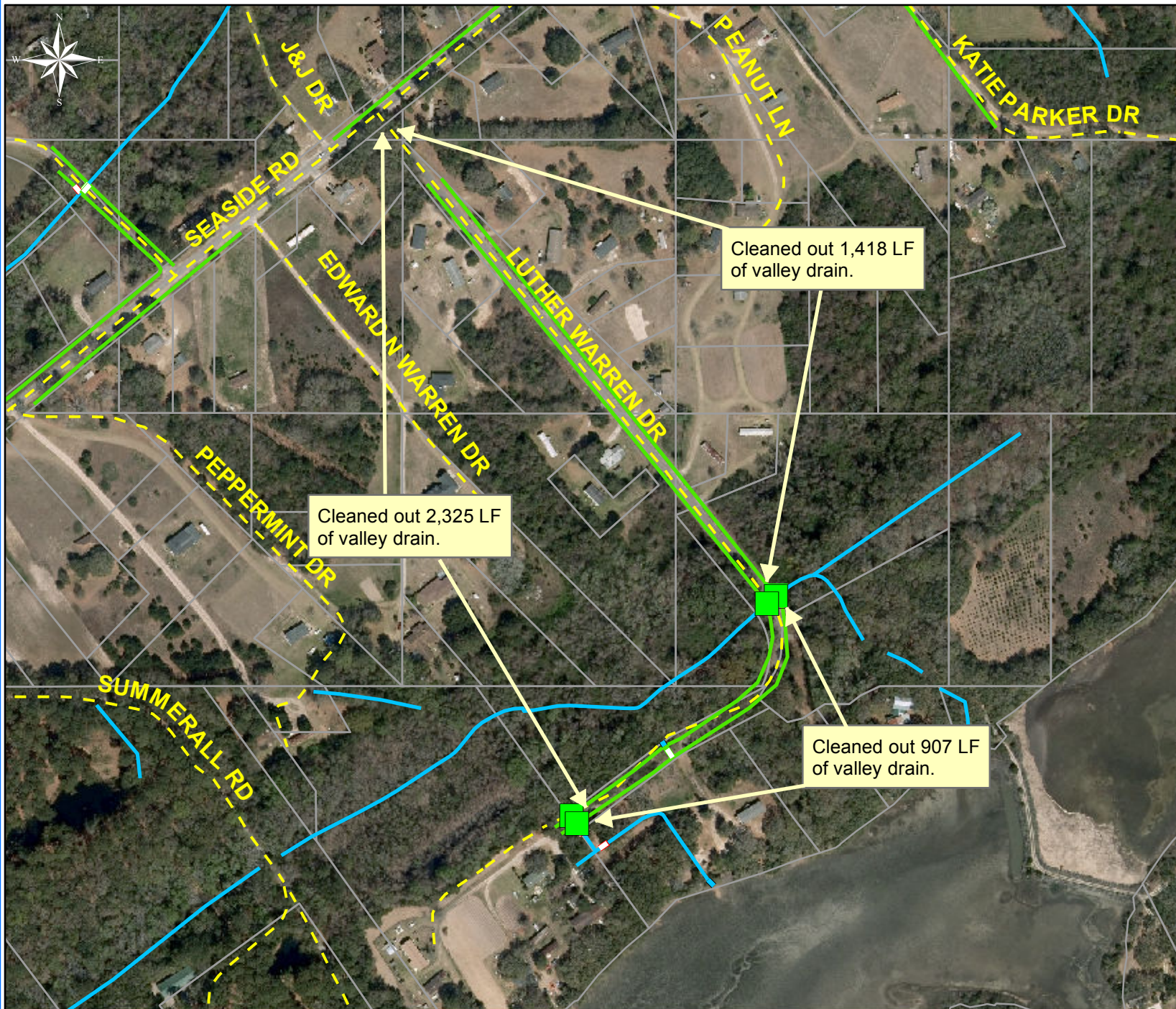
Narrative Description of Project:

Duration: 7/29/15 - 7/30/15

Project improved 15,552 L.F. of drainage system. Cleaned out 15,552 L.F. of valley drains. This project is consisted of the following areas: Tombee Road (7,418 L.F.), White Sands Circle (1,240 L.F.), Luther Warren Drive (4,650 L.F.), and Hunters Grove Road (2,244 L.F.)

2016-311 / St Helena Island Valley Drains	Labor Hours	Labor Cost	Equipment Cost	Material Cost	Contractor Cost	Indirect Labor	Total Cost
AUDIT / Audit Project	0.5	\$11.75	\$0.00	\$0.00	\$0.00	\$6.62	\$18.36
COVD / Cleaned Out Valley Drains	70.0	\$1,492.91	\$166.32	\$38.16	\$0.00	\$944.10	\$2,641.49
HAUL / Hauling	15.0	\$334.20	\$119.85	\$53.00	\$0.00	\$216.30	\$723.35
2016-311 / St Helena Island Valley Drains Sub Total	85.5	\$1,838.86	\$286.17	\$91.16	\$0.00	\$1,167.01	\$3,383.20
Grand Total	85.5	\$1,838.86	\$286.17	\$91.16	\$0.00	\$1,167.01	\$3,383.20

(Pictures Not Available)



Project: St. Helena
Island Valley
Drains- Luther
Warren Drive

Activity: Routine/
Preventive
Maintenance

Project #:
2016-311

Township/SW Dist:
St. Helena Island/8

Completed:
July 2015

Legend

Drainage Type

- Access Pipe
- Bleeder Pipe
- Channel Pipe
- Channel
- Stream
- Crossline Pipe
- Driveway Pipe
- Lateral
- Lateral Pipe
- River
- Road Pipe
- Roadside
- Roadside Pipe

0 80 160 320 480 640
Feet

1 inch = 330 feet



Project: St. Helena
Island Valley
Drains- White
Sands Circle

Activity: Routine/
Preventive
Maintenance

Project #:
2016-311

Township/SW Dist:
St. Helena Island/8

Completed:
July 2015

Legend

Drainage Type

- Access Pipe
- Bleeder Pipe
- Channel Pipe
- Channel
- Stream
- Crossline Pipe
- Driveway Pipe
- Lateral
- Lateral Pipe
- River
- Road Pipe
- Roadside
- Roadside Pipe

0 30 60 120 180 240
Feet

1 inch = 130 feet

Prepared By: BC Stormwater Management Utility

Date Print:07/18/2016

File:C:\project summaries map\St.Helena Island Valley Drains White Sands_2016-311



Project: St. Helena
Island Valley
Drains -Hunters
Grove Road

Activity: Routine/
Preventive
Maintenance














Project #:
2016-311

Township/SW Dist:
St. Helena Island/8

Completed:
July 2015

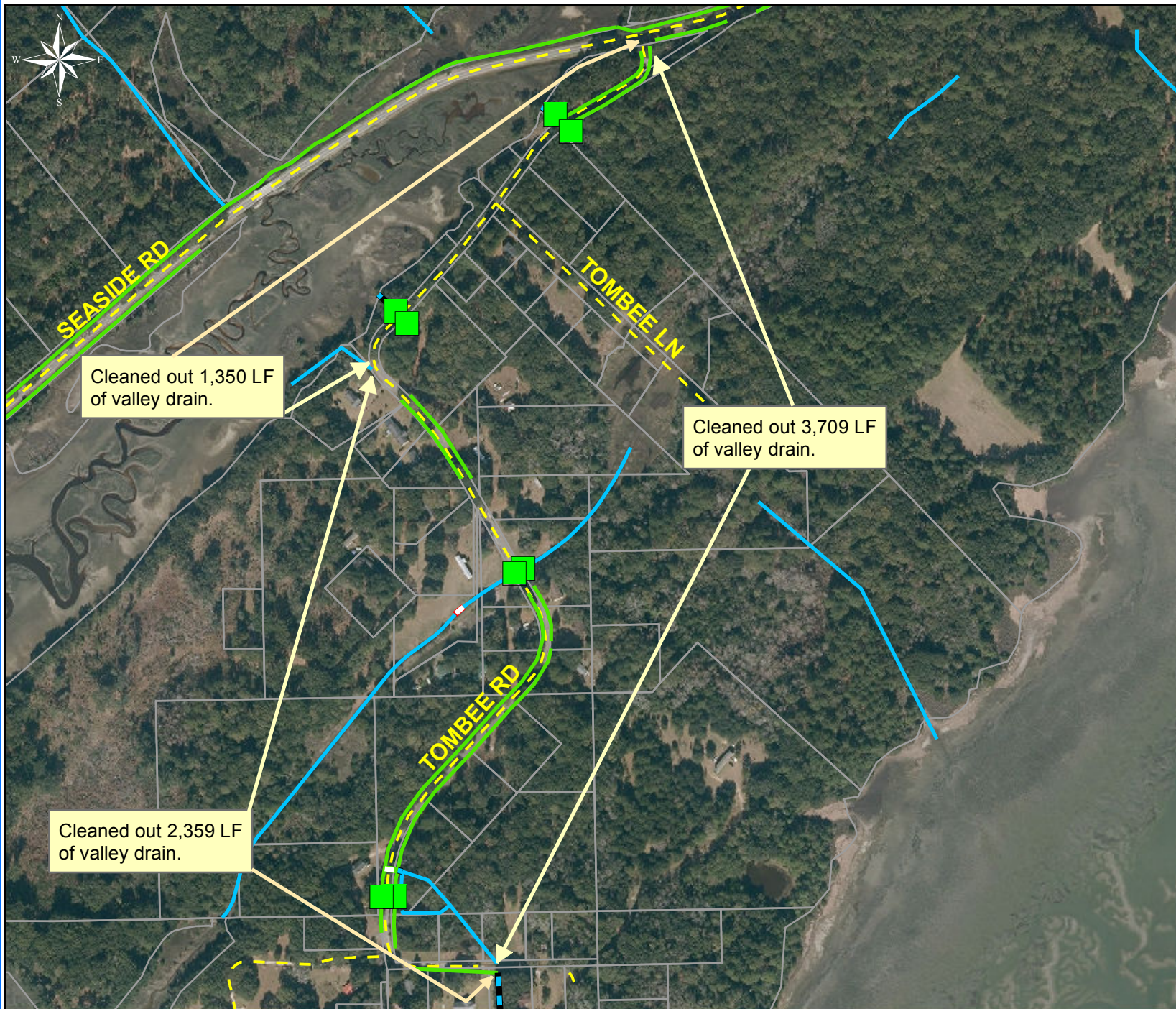
Legend

Drainage Type

-  Access Pipe
-  Bleeder Pipe
-  Channel Pipe
-  Channel
-  Stream
-  Crossline Pipe
-  Driveway Pipe
-  Lateral
-  Lateral Pipe
-  River
-  Road Pipe
-  Roadside
-  Roadside Pipe



1 inch = 170 feet



Project: St. Helena
Island Valley
Drains -Tombee
Road

Activity: Routine/
Preventive
Maintenance

Project #:
2016-311

Township/SW Dist:
St. Helena Island/8

Completed:
July 2015

Legend	
Drainage Type	
	Access Pipe
	Bleeder Pipe
	Channel Pipe
	Channel
	Stream
	Crossline Pipe
	Driveway Pipe
	Lateral
	Lateral Pipe
	River
	Road Pipe
	Roadside
	Roadside Pipe



1 inch = 420 feet